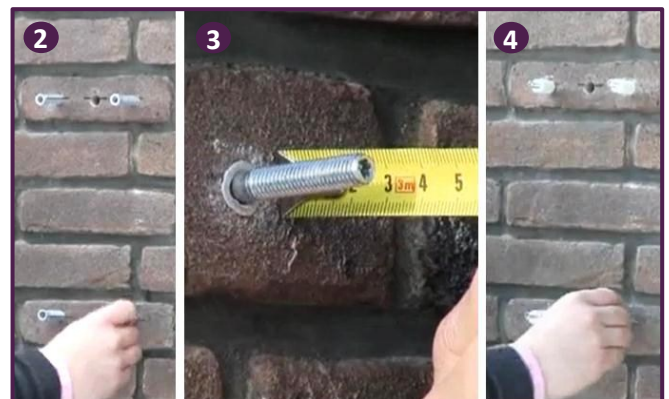





QUICK INSTALLATION GUIDE

CHECK REAR SIDE FOR INSTRUCTIONS AND DIMENSIONS



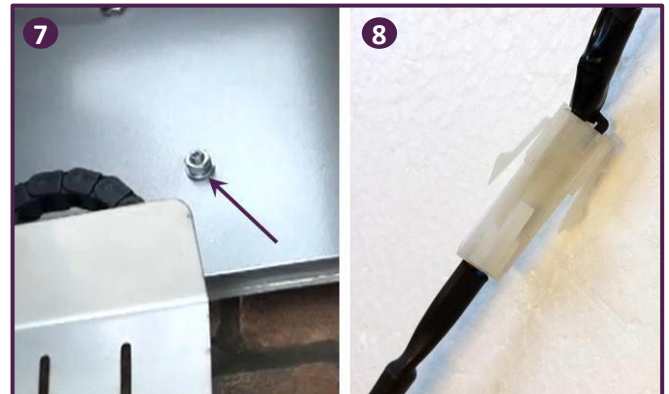
1. Mark and drill holes





2. Install plugs (4x )
 3. Install dowel screws (4x )
 (Max. 30mm extension)
 4. Install spacers on dowel screws (4x )



5. Push power cable through the hole
 6. Open cabinet and install it on the dowel screws



7. Install ring (4x ) and tighten nut (4x ) on
 the dowel screws from the inside of the cabinet
 8. Connect the power connector

CHECK REAR SIDE FOR INSTRUCTIONS AND DIMENSIONS